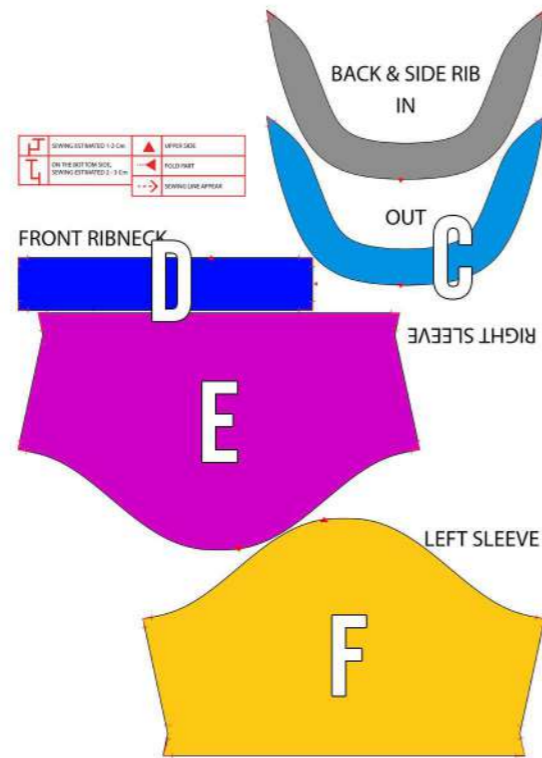


# JERSEY VOLLEY SHORT SLEEVE PATTERN AND GUIDANCE

**HOW TO**  
PUT YOUR DESIGN INTO A FULLPRINT PATTERN



**ILLUSTRATED**

# HOW TO

PUT YOUR DESIGN INTO A FULLPRINT PATTERN

Open the pattern file which you downloaded from the product page (please only use the pattern according to the size that you want to order) on Adobe Photoshop. Illustration is using Adobe Photoshop ....

# HOW TO CREATE WOMAN SMALL SLING BAG WITH YOUR OWN DESIGN



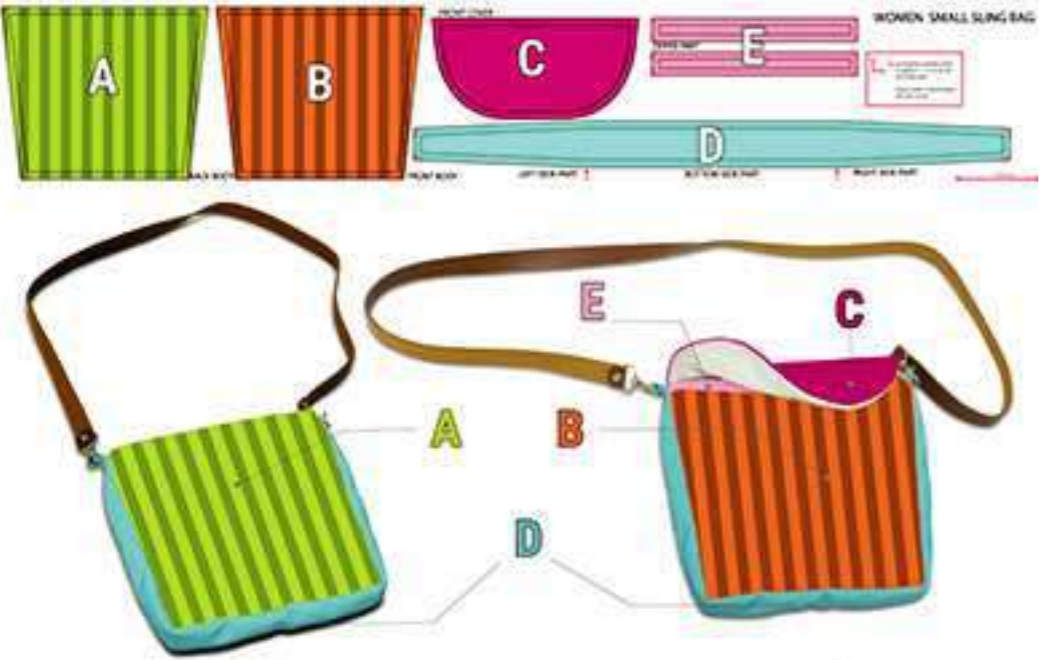
Need your attention:

1. Please pay attention to pattern part position.
2. Black line is fabric/pattern cutting line.
3. Red mark on every corner is a sewing/ folding line



ESTIMATED SEWING PART IS ABOUT 1 - 2 Cm AFTER PATTERN LINE

MAKE SURE YOUR DESIGN NOT BE CUTED



# Guidelines

## HOW TO PUT YOUR DESIGN INTO A FULLPRINT PATTERN

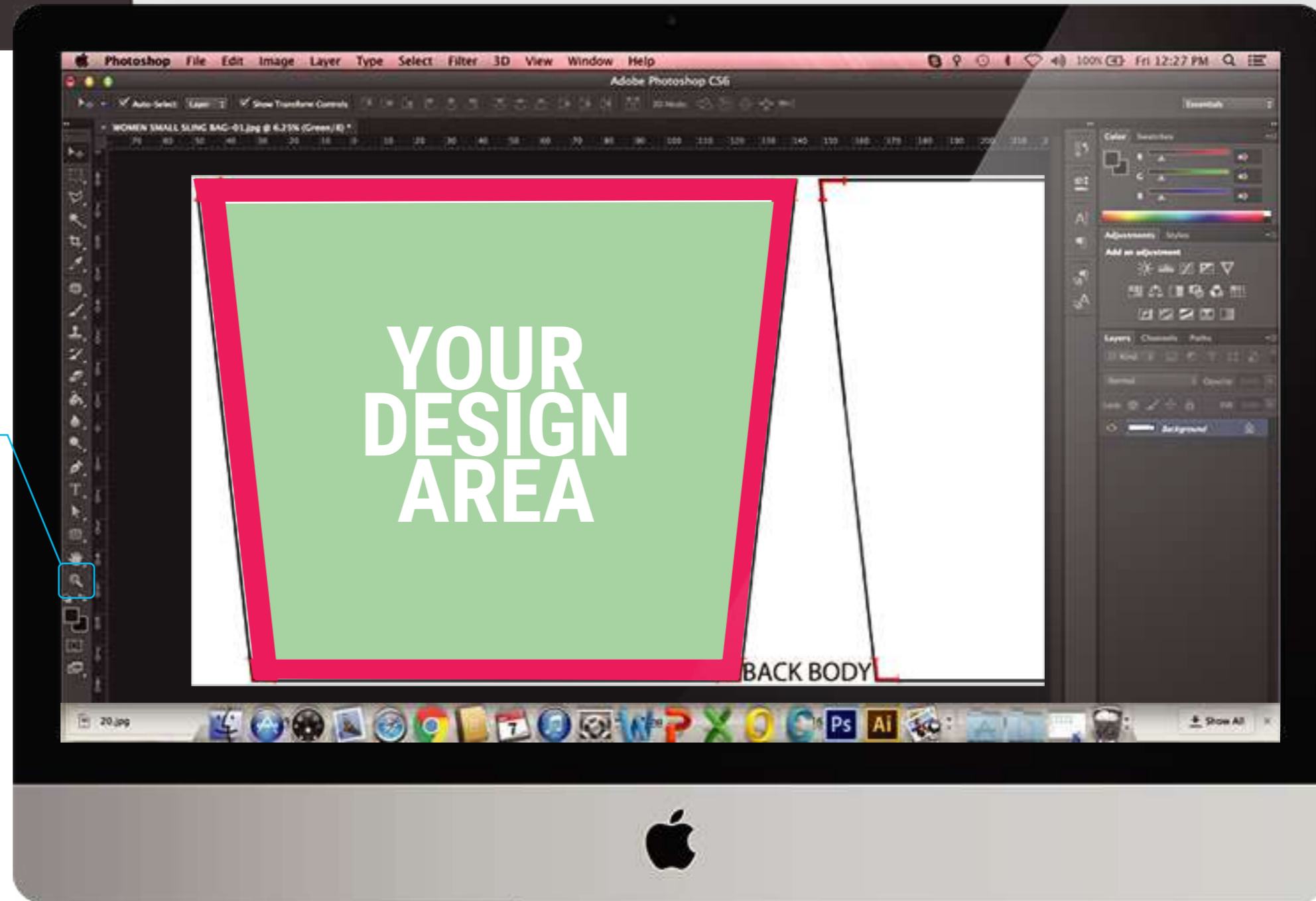
 ESTIMATED SEWING PART  
IS ABOUT 1 - 2 Cm AFTER  
PATTERN LINE

MAKE SURE YOUR DESIGN  
NOT BE CUTED

To avoid your design is being cutted/ distructed, follow these steps.

1. Enlarge the area using **Zoom tool** [  ] at left side so you can see the red at the corner.

2. Connect the red mark and you may see the **Red Area** as an estimated **sewing area** and **Green Area** is the estimated **your design area**.

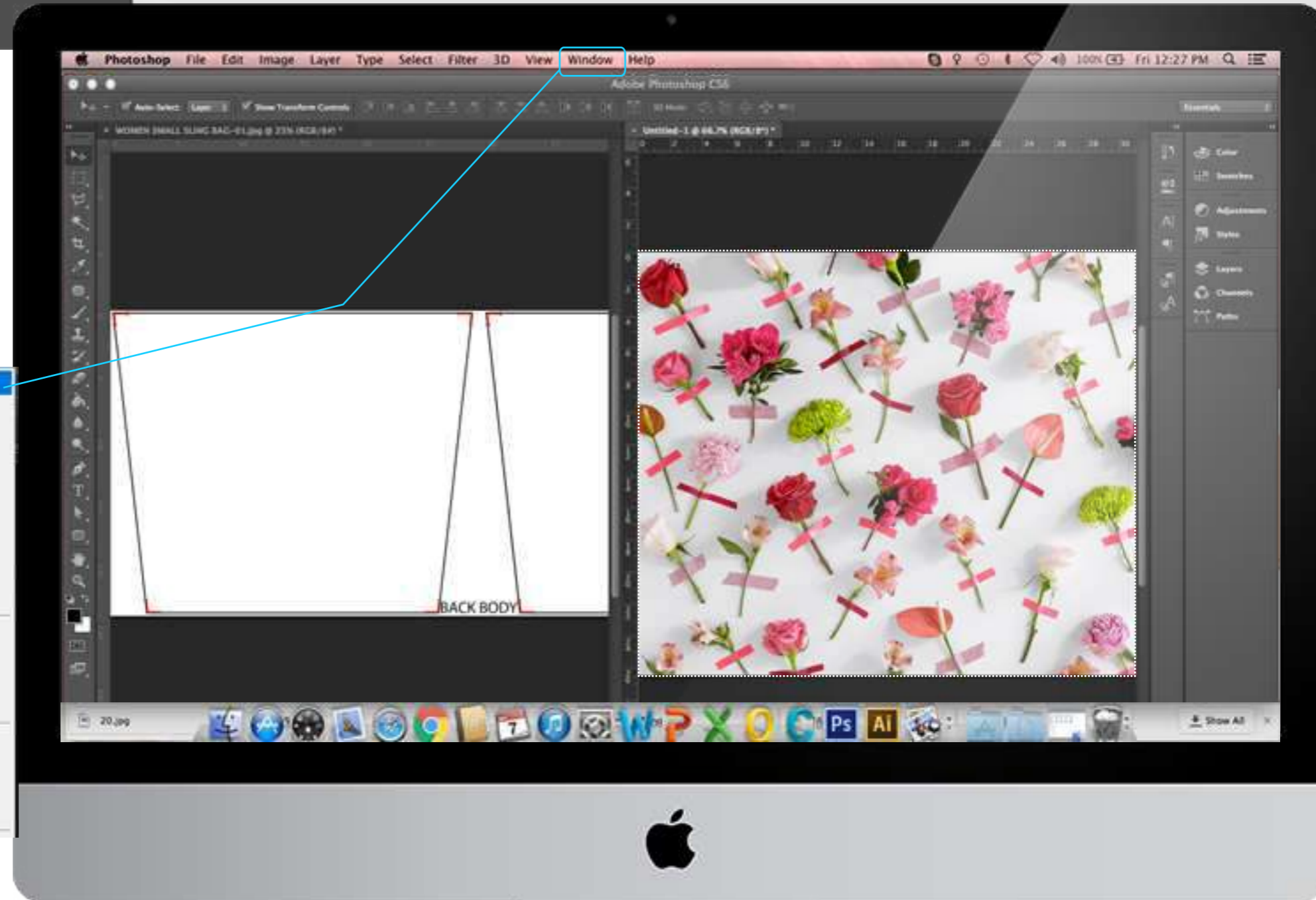


# FILLING PATTERN

## HOW TO PUT YOUR DESIGN INTO A FULLPRINT PATTERN

Open the pattern file and your design file on Adobe Photoshop.

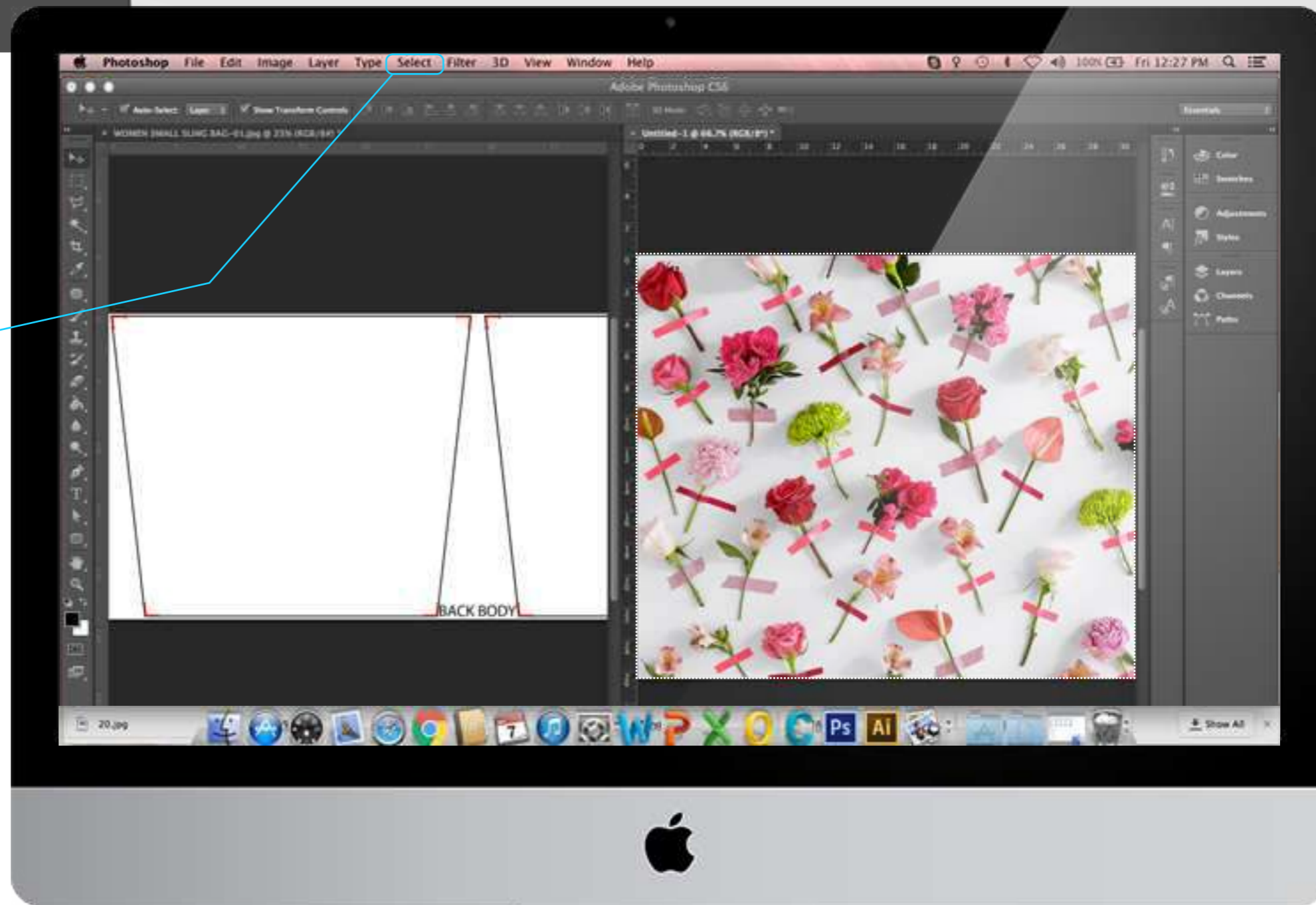
1. Go to **Window** menu on the menu bar, select **Arrange** then **Title All Vertically** (**Window > Arrange > Title All Vertically**)



# FILLING PATTERN

**HOW TO**  
PUT YOUR DESIGN INTO A FULLPRINT PATTERN

2. From your Design file, go to **Select** menu on menu bar then choose All (**Select > All**)

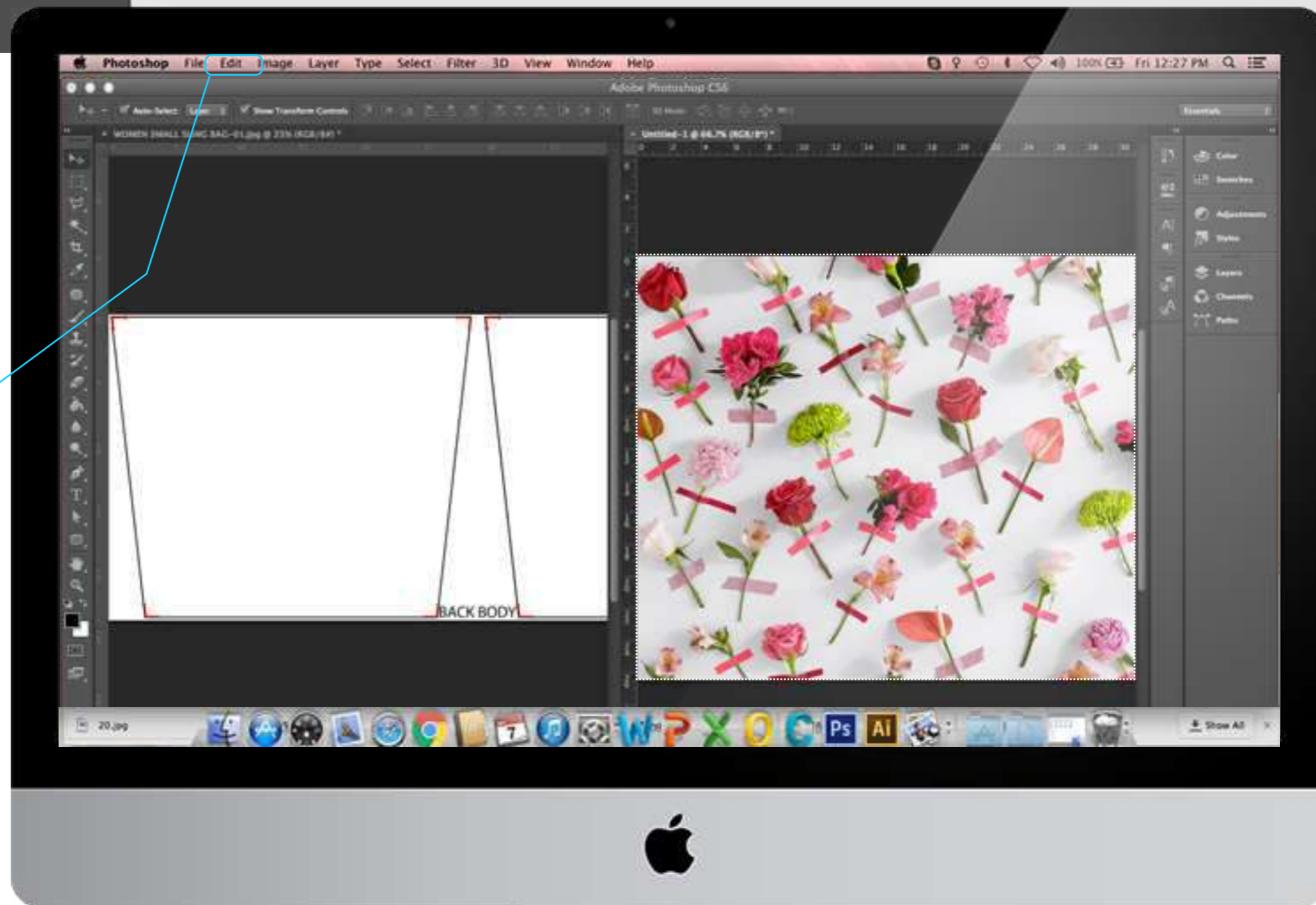


# FILLING PATTERN

**HOW TO**  
PUT YOUR DESIGN INTO A FULLPRINT PATTERN

3. Goto **Edit** than **Copy** (**Edit > Copy**)

Undo Copy Pixels	Ctrl+Z
Step Forward	Shift+Ctrl+Z
Step Backward	Alt+Ctrl+Z
Fade...	Shift+Ctrl+F
Cut	Ctrl+X
<b>Copy</b>	<b>Ctrl+C</b>
Copy Merged	Shift+Ctrl+C
Paste	Ctrl+V
Paste Special	
Clear	
Check Spelling...	
Find and Replace Text...	
Fill...	Shift+F5
Stroke...	
Content-Aware Scale	Alt+Shift+Ctrl+C
Puppet Warp	
Free Transform...	Ctrl+T



# FILLING PATTERN

## HOW TO PUT YOUR DESIGN INTO A FULLPRINT PATTERN

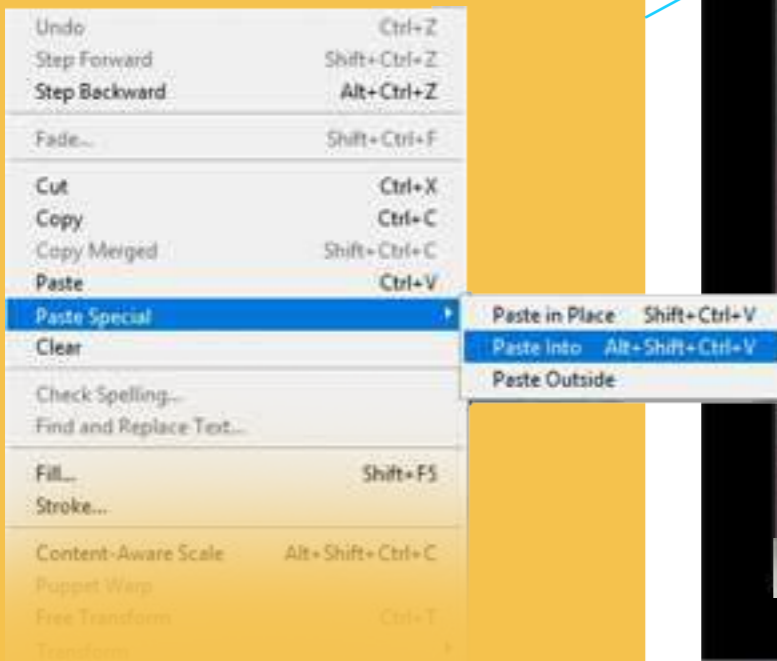
4. On the pattern file window, use the **Magic Wand Tool** (at tool bar on the left side) then left-click inside the part you want to work with



# FILLING PATTERN

## HOW TO PUT YOUR DESIGN INTO A FULLPRINT PATTERN

5. Go to **Edit** from menu bar then select **Paste Special** and **Paste Into** (**Edit > Paste Special > Paste Into**). You may adjust the pasted image by dragging it.

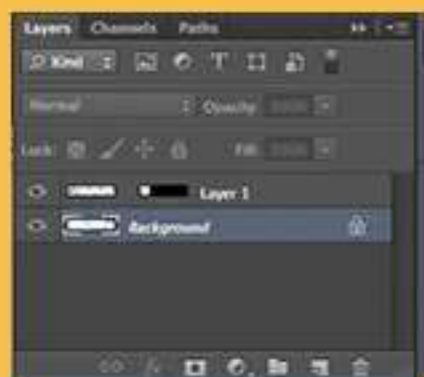




# FILLING PATTERN

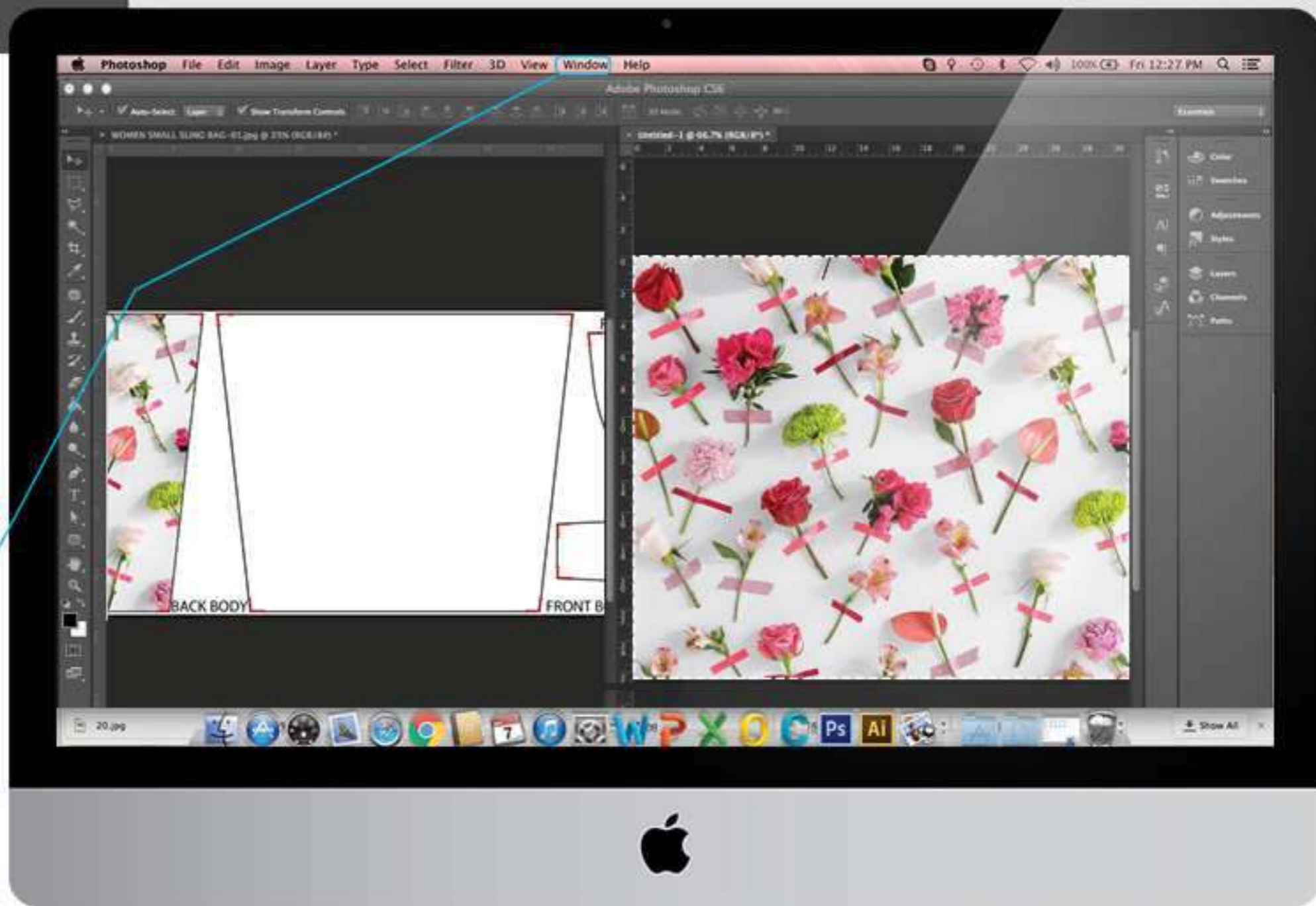
**HOW TO**  
PUT YOUR DESIGN INTO A FULLPRINT PATTERN

6. Before continue another part you should click **background layer** at layer list.



If layer list did not show you can easily press **F7** button on your keyboard or go to menu bar **Window > Layer**

7. You can repeat selecting part by using **Magic Wand** and after you can **Paste Special** the design until all part filled.



# SAVING FILE

## HOW TO PUT YOUR DESIGN INTO A FULLPRINT PATTERN

As the final step you can Save your design by clicking from the menu bar **File > Save As**

New...	Ctrl+N
Open...	Ctrl+O
Browse in Bridge...	Alt+Ctrl+O
Browse in Mini Bridge...	
Open As...	Alt+Shift+Ctrl+O
Open as Smart Object...	
Open Recent	
Close	Ctrl+W
Close All	Alt+Ctrl+W
Close and Go to Bridge...	Shift+Ctrl+W
Save	Ctrl+S
<b>Save As...</b>	<b>Shift+Ctrl+S</b>
Check In...	
Save for Web...	Alt+Shift+Ctrl+S
Revert	F12

For the file type change it to **JPG** format.

**NOTE:**  
Minimum **Quality 8 (High)**  
Please **NOT** to change **Image Size**.  
Always aware of **Cutting/Sewing Part**.

